



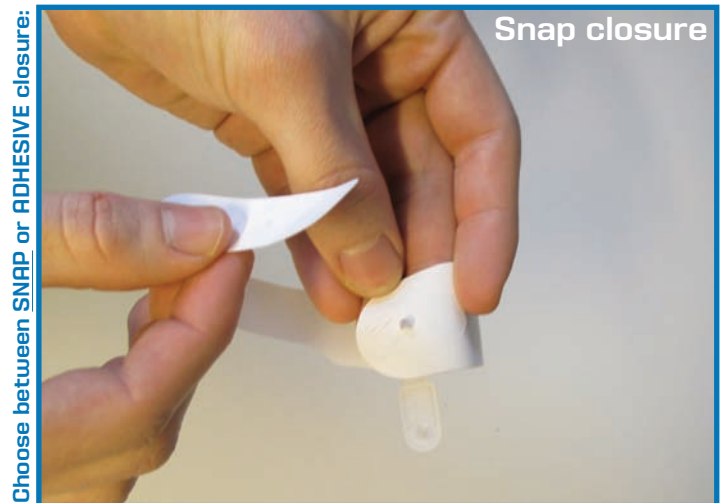
**Step 1** Print the layout on the pattern sheet using a laser printer



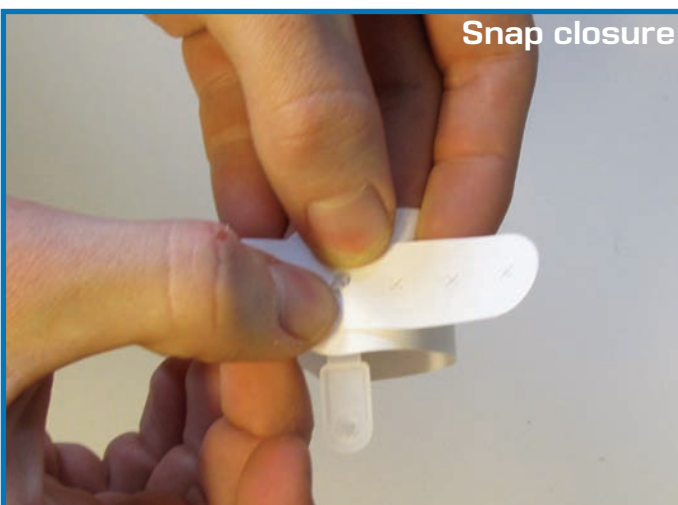
**Step 2** Push wristband away from pattern sheet while holding the sheet with the other hand



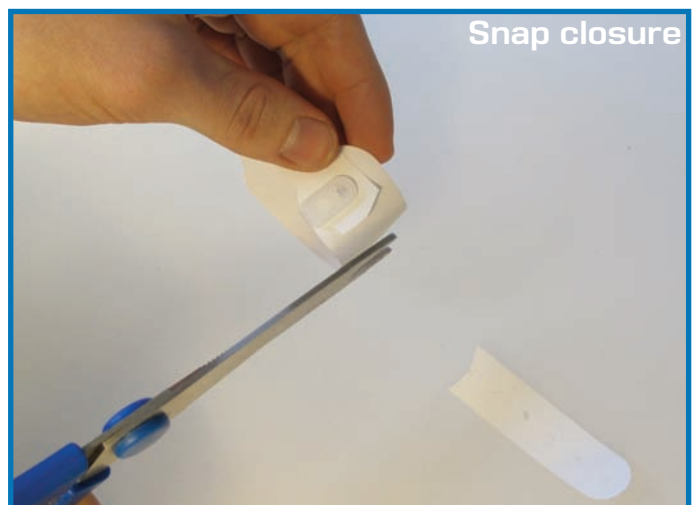
**Step 3** Fully remove the wristband



**Step 4-1** Place plastic snap through "X-Hole"



**Step 4-2** Place wristband around patient's wrist and pierce at the appropriate "X-Hole" then close the snap



**Step 4-3** Cut off excess portion of wristband

Choose between SNAP or ADHESIVE closure:



**Step 5-1** Remove the clear cover flap from the adhesive area



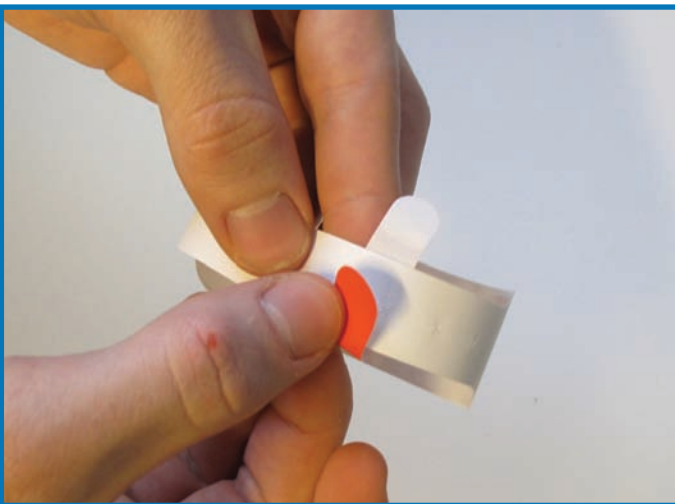
**Step 5-2** Place wristband around patient's wrist and press adhesive closure



**Step 6** Push the colour tag away from the pattern sheet



**Step 7** Remove the clear cover flap from the adhesive area



**Step 8** Place the colour tag around the wristband and paste the adhesive area on the other end

